

The background is a vibrant orange-red color. It features two large, semi-transparent rectangular panels. The left panel and the top-right panel contain a pattern of overlapping, glowing blue and white lines that form a complex, organic, and somewhat abstract shape, resembling a stylized flame or a light trail. The central area, where the two panels do not overlap, is a solid orange-red color. In this central area, the words "Red Light Heritage" are written in a large, bold, white, sans-serif font, stacked vertically.

Red Light Heritage

Heritage?

The practice of deciding what we take from the past into the future

preserving

protecting

securing

ensuring

cherishing

deciding

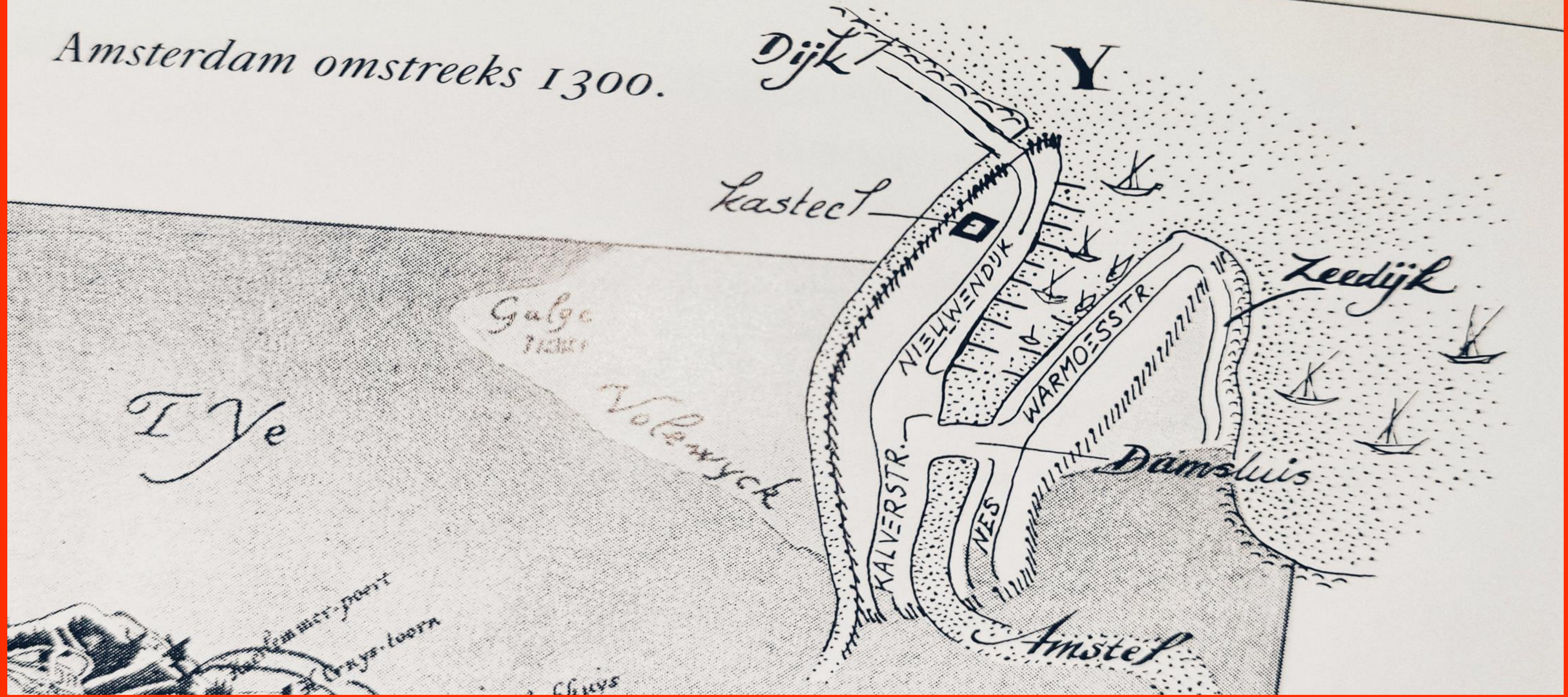
reducing



Red Light District ad an invention of life

Sex work = work

Amsterdam omstreeks 1300.



Dijk

Y

Leestect

Galge
11300

I J e

Voleruyck

NIEUWENDIJK

WARMOESSTR.

KALVERSTR.

NES

Damsluis

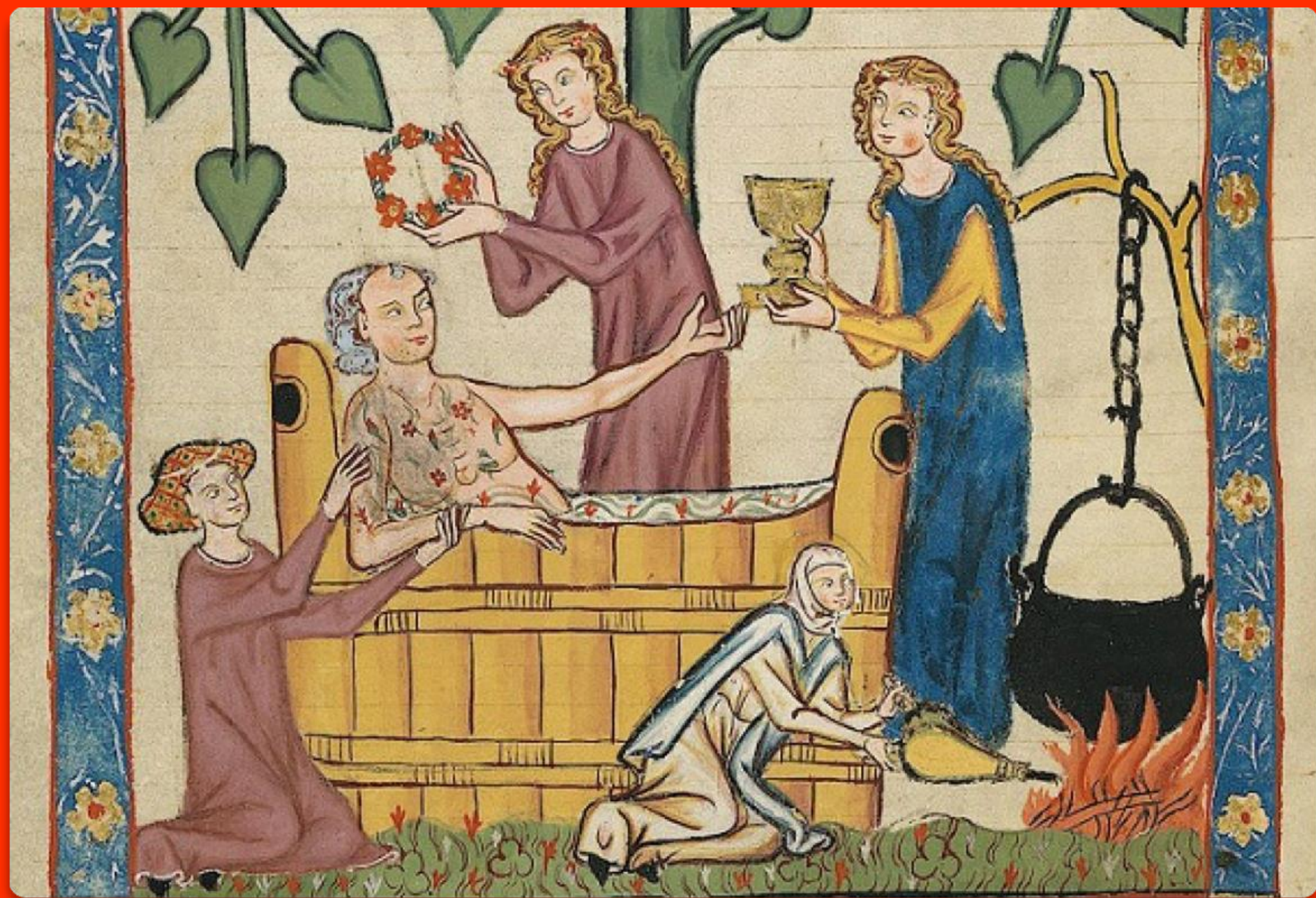
Zeedijk

Amstel

Amstel met poort

Amstel met poort

Cluys







**"the city center should be
a place that cherishes
their heritage."**

**Who's
Heritage?**

**"sex and drugs are not part of our
heritage"**



PALEIS ^{VAN}_{DE} WEEMOED







Who's Heritage?